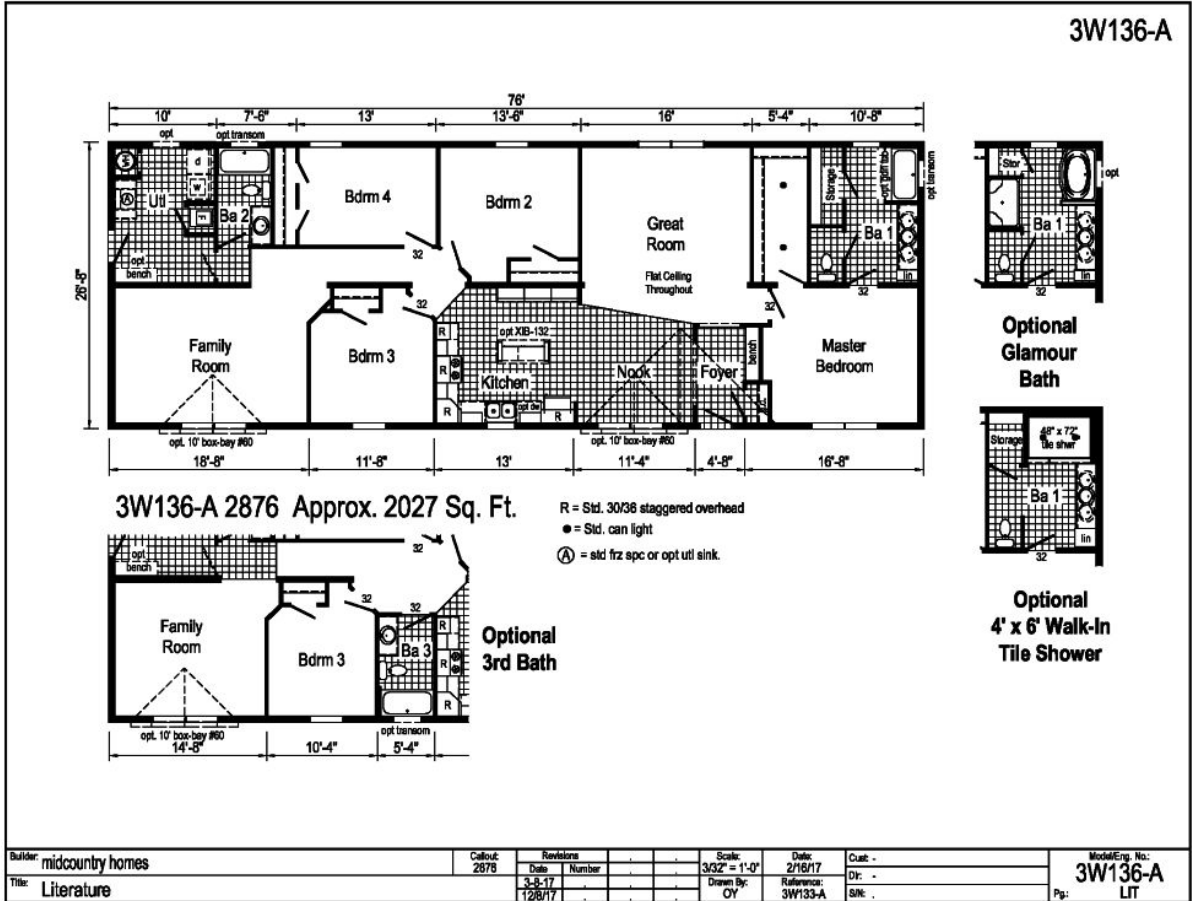


# PRINTABLE INFO SHEET

Series: Westlake Ranch Homes  
 Model: 3W136A



## About This Model

Style: Ranch / Bedrooms: 4 / Bathrooms: 3 / Square Feet: 2027

## CUSTOMER CONTACT

Notes: \_\_\_\_\_

\_\_\_\_\_

\_\_\_\_\_

\_\_\_\_\_

# PRINTABLE INFO SHEET

Series: Westlake Ranch Homes

Model: 3W136A



## Standards & Features

### Interior

- Primed Drywall Throughout
- Orange Peel Finish
- 8'-0" Flat Ceiling
- Orange Peel Finish
- Recessed LED Lights
- Black Dining Room Light
- 2-Panel White Painted
- Craftsman Interior Doors
- Pre-Hung Doors with Mortise Hinges
- Metal Interior Passage Sets
- Window Valances
- 1" Mini Blinds Throughout
- Smoke Detectors with Battery Back-Up
- Wire Shelving in Closets
- White Painted Mouldings Throughout
- 2 1/4" Window and Door Casing

### Exterior

- Black Lantern Light at Front and Rear Door
- Vinyl Dutch Lap Siding
- Vinyl Insulated Windows with Low-E Glass
- Lineals Front Door Side
- GFI-Protected Exterior Receptacle at Each Exterior Door
- O.S.B. Sheathing
- Fixed Roof

### Exterior (continued)

- 12" Overhangs & Eaves (Ranch)
- 4" Overhangs & 12" Eaves (Single)
- 3-Tab Shingles
- Ridge Vent Roof Ventilation System
- Ice Shield
- 3/0x6/8 Fiberglass 6-Panel Front & Rear Door w/ Deadbolt Keyed Alike Locksets

### Construction

- Transverse Floor System on 16" Centers with 3/4" OSB Decking\*\*
- 2x6 Floor Joist on 14 and 28 Wide Models
- 2x8 Floor Joist on 16 and 32 Wide Models
- 2x6 Exterior Walls on 16" Centers
- 82" Windows Headers
- 30# Roof Load

### Kitchen

- Empire Brushed Nickel High Rise Faucet
- Stainless Steel Sink 33x22x8
- One USB Receptacle
- 30" Black Free-Standing Gas Range
- Power Range Hood with Fan & Light
- 18 Cu. Ft. Black Frost-Free Double Door Refrigerator

## CUSTOMER CONTACT

Notes:

---

---

---

---

# PRINTABLE INFO SHEET

Series: Westlake Ranch Homes

Model: 3W136A



## Standards & Features (continued)

### Baths

- 60" Fiberglass Tub/Showers
- Tub/Shower Curtain &
- Curved Rod
- 1.6 Gallon Per Flush Elongated Toilets
- China Stool, Tank, & Lid
- Square China Sinks with Overflows & Pop-Up Drains
- Bevel Edge Mirrors
- Empire Brushed Nickel Faucets
- Anti-Scald Valves on Showers &
- Tubs

### Cabinetry

- KCMA
- Premium Mission Cabinet Doors with Full Overlay
- Premium Cabinet Face Frames & Stiles
- Brushed Nickel Cabinet Hardware
- Hidden Cabinet Hinges
- 30"/36" Staggered Overhead Cabinets
- Base & Wall Cabinets with Adjustable Shelves
- 100# Undermount Soft Close Drawer Guides
- Laminate Countertops with Crescent Edge
- 4" Laminate Backsplash
- 36" High Vanities

### Bedrooms

- Wire Shelving in Closets
- Switched Light in All Walk-In Closets

### Flooring

- Take Away Shaw Carpet with ShawGuard Carpet Protector
- Rebond Carpet Pad with Tackstrip Carpet Installation
- LuxFlor No-Wax Vinyl Floor Coverings

### Utilities

- 100 AMP Electrical Service
- Plumb & Wire for Washer
- Wire & Vent for Dryer
- Water Shut Offs Throughout
- Main Water Shut-Off Valve
- One Exterior Water Faucet
- 30 Gallon Electric Hot Water Heater with Pan
- Air Ready Gas Furnace
- 5-Wire Thermostat
- Copper Wiring Throughout

### Insulation

- Floor R-11 Fiberglass Insulation
- Walls R-19 Fiberglass Insulation
- Ceiling R-30 Avg. Blown Insulation
- \*\*Spacing for Framing Members may vary due to Design Requirements

## CUSTOMER CONTACT

Notes:

---

---

---

---