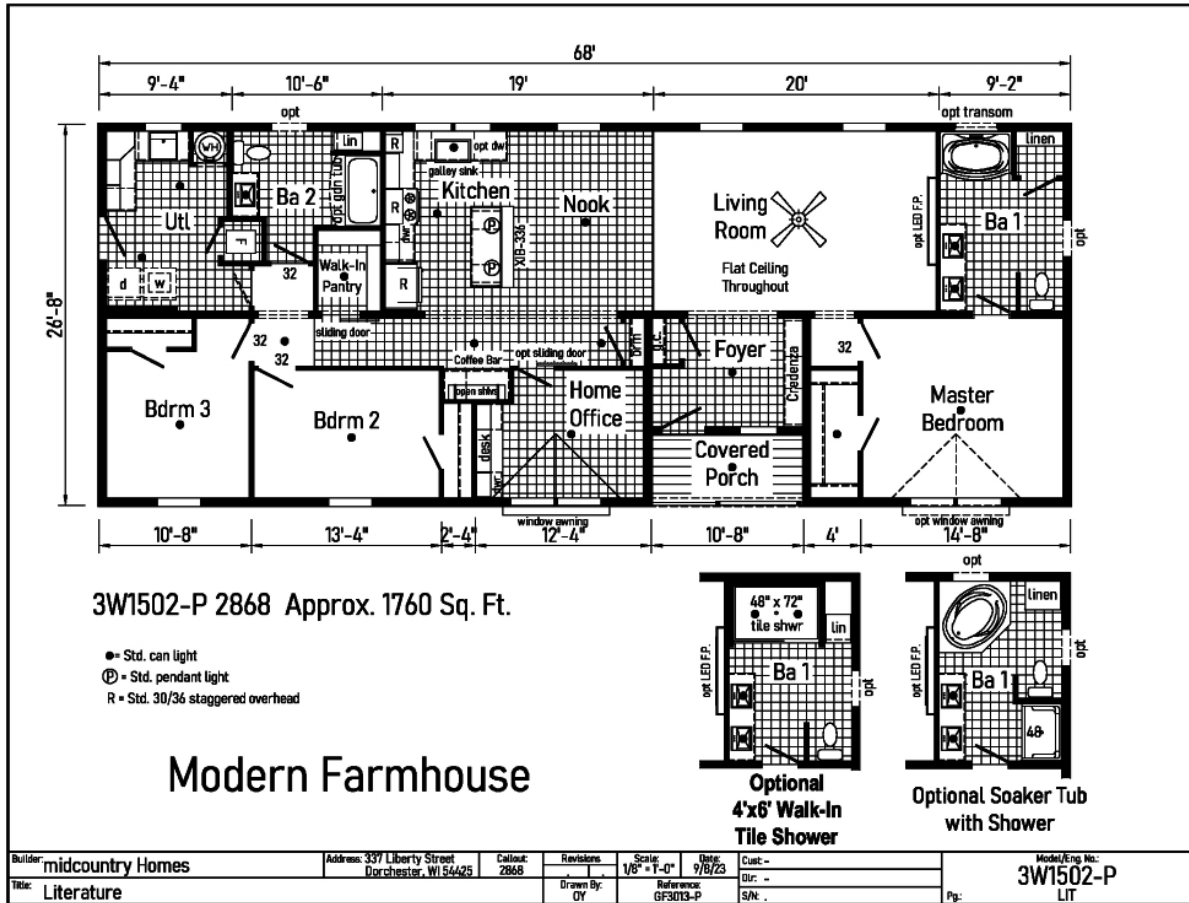


# PRINTABLE INFO SHEET

Series: Modern Farmhouse

Model: 3W1502-P



## About This Model

Style: Ranch / Bedrooms: 3 / Bathrooms: 2 / Square Feet: 1760

## CUSTOMER CONTACT

Notes: \_\_\_\_\_

\_\_\_\_\_

\_\_\_\_\_

\_\_\_\_\_

# PRINTABLE INFO SHEET

**Series: Modern Farmhouse**

**Model: 3W1502-P**



## Standards & Features

### Interior

- Primed Drywall Throughout Orange Peel Finish
- 8'-0" Flat Ceiling Orange Peel Finish
- Recessed LED Lights
- Pendant Dining Room Light
- 2-Panel White Painted Craftsman Interior Doors
- Pre-Hung Doors with Mortise Hinges
- Metal Interior Passage Sets
- Window Valances
- 1" Mini Blinds Throughout
- Smoke Detectors with Battery Back-Up
- Wire Shelving in Closets
- White Painted Mouldings Throughout
- Flat 2 1/4" Window and Door Casing
- Flat 3 1/2" Baseboards

### Exterior

- Black Gatsby Light at Front and Rear Door
- Vinyl Dutch Lap Siding
- Vinyl Insulated Windows with Low-E Glass
- Lineals Front Door Side
- GFI-Protected Exterior Receptacle at Each Door
- O.S.B. Wall & Roof Sheathing Fixed Roof
- 12" Overhangs and Eaves (Ranch)
- 4" Overhangs and 12" Eaves (Single)
- 3-Tab Shingles
- Ridge Vent Roof Ventilation System
- Ice Shield
- 3/0x6/8 Fiberglass 6-Panel Front and Rear
- Door w/ Deadbolt Keyed Alike Locksets

### Construction

- Transverse Floor System on 16" Center\*

### Construction (continued)

- 3/4" OSB Decking\*
- 2x6 Floor Joist on 14 and 28 Wide Models
- 2x8 Floor Joists on 16 and 32 Wide Models
- 2x6 Exterior Walls on 16" Center\*
- 82" Window Headers
- 30# Roof Load

### Kitchen

- Empire Brushed Nickel High Rise Faucet
- Stainless Steel Sink 33x22x8
- One USB Receptacle
- 30" Black Free-Standing Gas Range
- Power Range Hood with Fan and Light
- 18 Cu. Ft. Black Frost-Free Refrigerator w/Top Freezer

### Baths

- 60" Fiberglass Tub/Shower Tub/Shower Curtain and Curved Rod
- Dual Flush Elongated Hi-Rise Toilets
- China Stool, Tank, and Lid
- Square China Sinks with Overflow and Pop-Up Drain
- Bevel Edge Mirrors
- Empire Brushed Nickel Faucets
- Anti-Scald Valves on Showers & Tubs

### Cabinetry

- KCMA Certified Cabinets
- Hardwood Wrapped Mission Cabinet Doors with Full Overlay
- Hardwood Wrapped Cabinet Face Frames and Stiles
- 5-Piece Drawer Fronts
- Brushed Nickel Cabinet Pulls Hardware
- Soft Close Hidden Cabinet Hinges
- Base and Wall Cabinets with Adjustable Shelves

## CUSTOMER CONTACT

Notes:

---

---

---

---

# PRINTABLE INFO SHEET

Series: Modern Farmhouse

Model: 3W1502-P



## Standards & Features (continued)

### Cabinetry (continued)

- 100# Undermount Soft Close Drawer Guides
- Laminate Countertops with Crescent Edge
- 4" Laminate Backsplash
- 36" High Vanities

### Bedrooms

- Wire Shelving in Closets
- Switched Light in All Walk-In Closets

### Flooring

- Take Away Shaw Carpet with ShawGuard Carpet Protector
- Rebond Carpet Pad with Tackstrip Carpet Installation
- Shaw Vinyl Floor Coverings

### Utilities

- 100 AMP Electrical Service
- Plumb and Wire for Washer
- Wire and Vent for Dryer
- Water Shut Offs Throughout
- Main Water Shut-Off
- One Exterior Water Faucet (Frost Free)
- 30 Gallon Electric Water Heater with Pan
- Gas Furnace
- 5-Wire Thermostat
- Copper Wiring Throughout

### Insulation

- Ceiling R-30 Avg. Blown Insulation
- Walls R-19 Fiberglass Insulation
- Floor R-11 Fiberglass Insulation

Items in bold are the Farmhouse Additional Features

### 10' Dormer

- Black 2/2 Gridded Windows
- Black 3 Grid Front Door

### 10' Dormer (continued)

- Black 1/2 Lite Rear Door
- White Window Lineals
- White Vinyl Siding
- (2) 10' Vertical Accents w/ Graphite White 6" Aluminum Columns
- Window Awning w/Black Metal Roof Below Dormer
- Black Exterior Gaslights
- White Kitchen Island w/ Black Painted Kitchen Cabinets
- Black and Gold Cabinet Hardware
- Door Side LED Can Lights at Soffit
- Open Shelves w/ Black Brackets
- Full Height Ceramic
- Galley Sink Apron Front
- Black Coil Spring Faucet
- 2 Pendent Lights at Island
- Shiplap Wall Over Credenza
- Double Lav at Bath 1
- Black Faucets
- Curved Front Tub at Bath 1
- 2 Panel Interior Doors
- Thinscape Countertops at Vanities
- STD Utility Sink
- Sliding Barn Door at Bath 1
- Lighted Paddle Fan

## CUSTOMER CONTACT

Notes:

---



---



---



---